

A few info about Janisico, our new Yngling

Recently, I found Janisico strangely moored and the differed sheets and halyards arranged in all possible ways – bar the most obvious.

Please, take 2' to go through this doc and make sure you'll adopt the ways illustrated here.

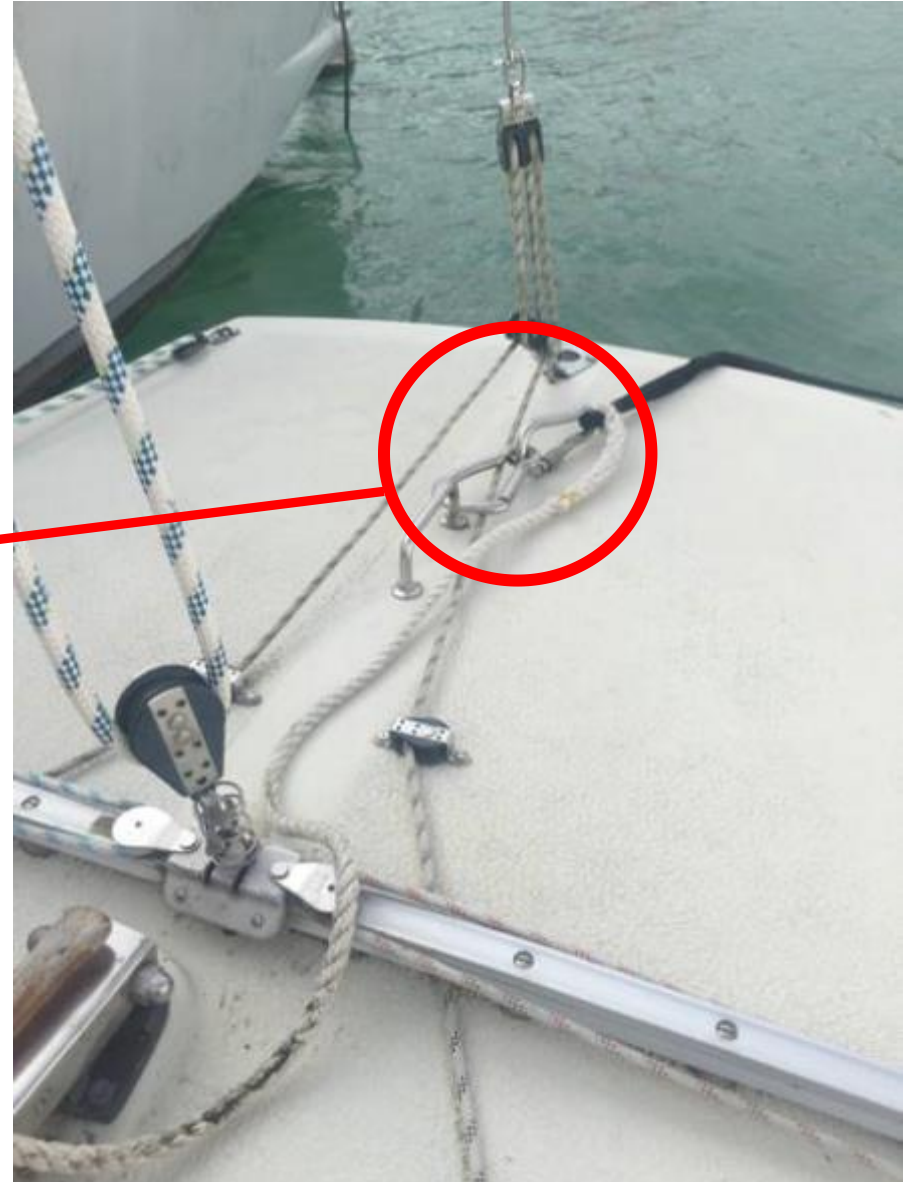
Thanks! :-)

Back mooring

The back mooring was a bit too short and made stepping on and off the boat difficult. I therefore added a cleat.

Look carefully the way the two cleats are placed the one after the other. It has to be like this. **No other way is correct!**

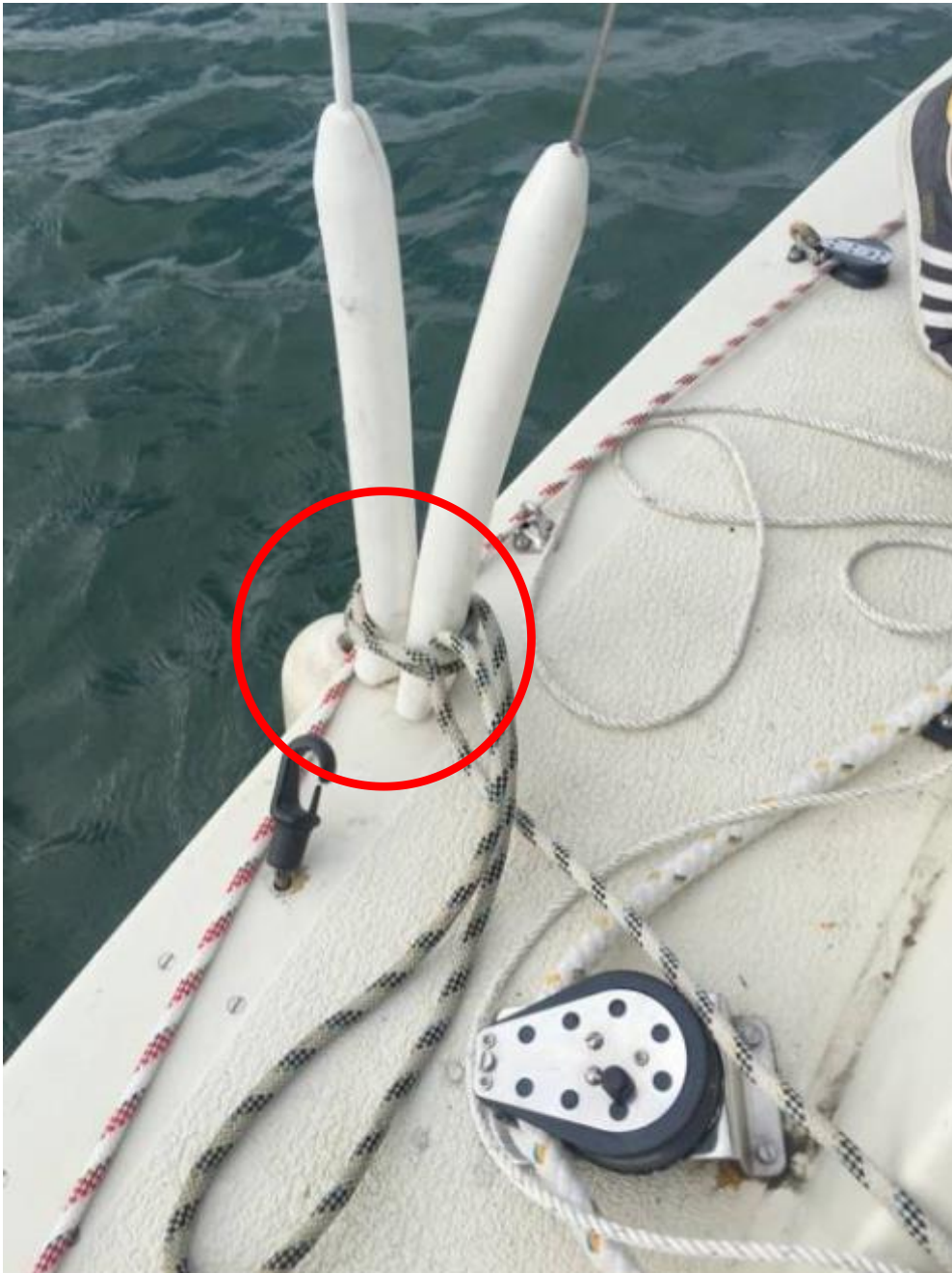
Of course, **the backstay is loose** when in the harbour!!!!



The little cleat screwed to the bottom of the boat is the correct place to attach the fenders.

Do NOT undo the knots, just bring the fenders into the boat and sail!





Please attach the fenders to the shrouds, not to some sheet !

Thanks